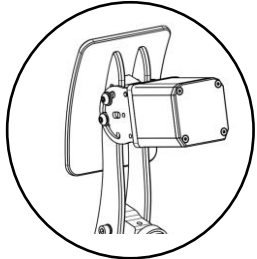
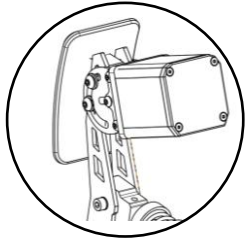


# VNM DIRECT HAPTIC

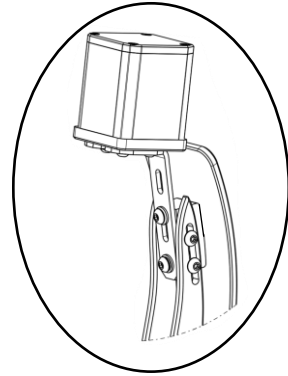
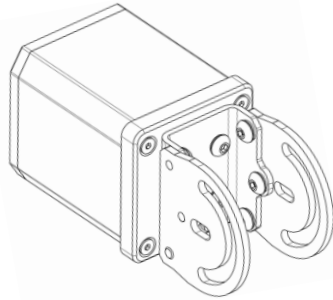
## Quick Guide



**Pedal V1**

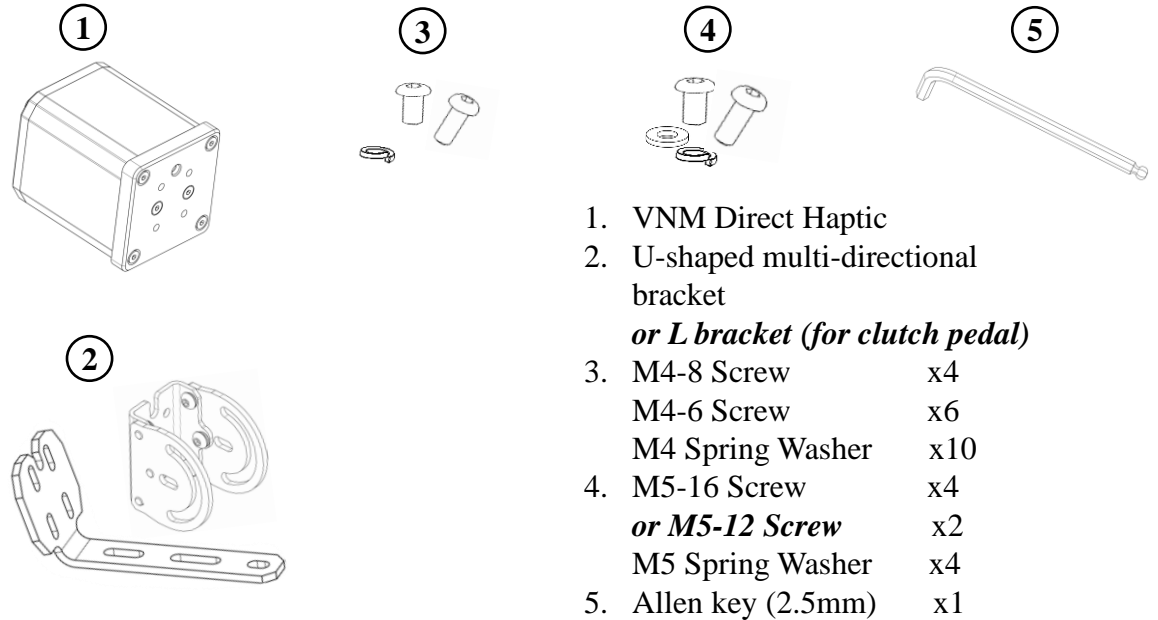


**Pedal Lite**



**Clutch Pedal**

## Content

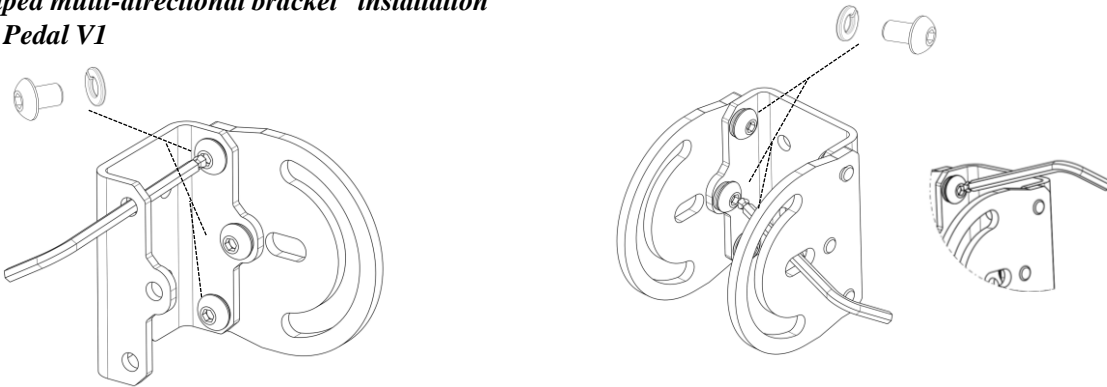


1. VNM Direct Haptic
2. U-shaped multi-directional bracket  
*or L bracket (for clutch pedal)*
3. M4-8 Screw x4  
M4-6 Screw x6  
M4 Spring Washer x10
4. M5-16 Screw x4  
*or M5-12 Screw* x2  
M5 Spring Washer x4
5. Allen key (2.5mm) x1

## Installation

*(VNM Pedal V1)*

### a. "U-shaped multi-directional bracket" installation for VNM Pedal V1



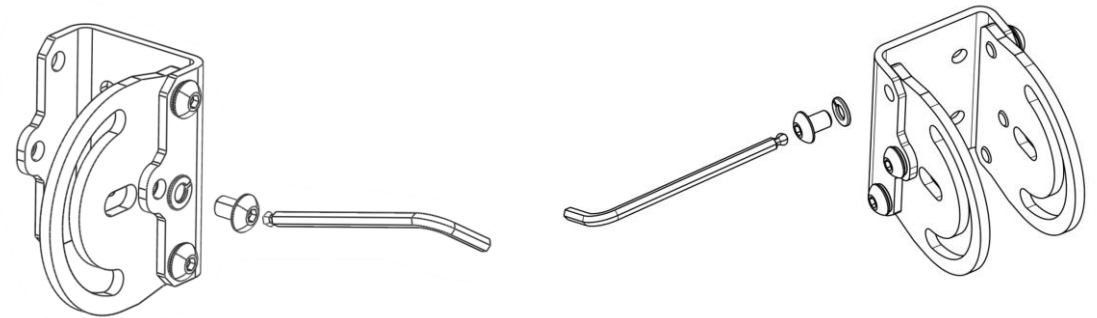
Use **6x M4-6 Screws** along with **Spring Washers** to assemble the U-shaped multi-directional bracket

For **VNM Pedal V1**, place the bracket arm on the **outside** of the bracket body

## Installation

*(VNM Pedal Lite)*

### b. "U-shaped multi-directional bracket" installation for VNM Pedal Lite



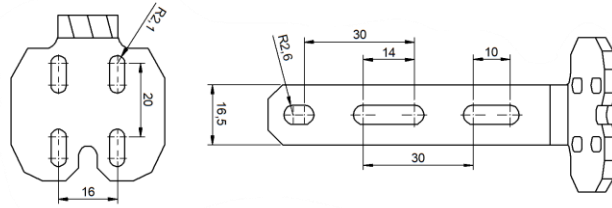
Use **6x M4-6 Screws** along with **Spring Washers** to assemble the U-shaped multi-directional bracket

For **VNM Pedal Lite**, place the bracket arm on the **inside** of the bracket body

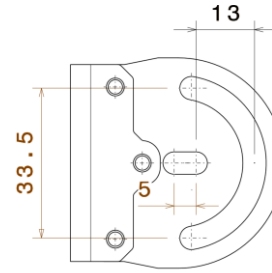
## Installation

c. *Installation of U-shaped multi-directional bracket for other pedal (may require additional washers 1, 2, 3 mm, M5 bolts)*

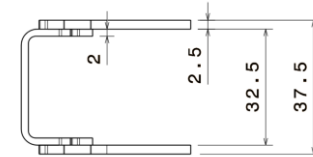
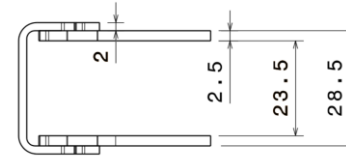
*To check whether our product is compatible with your pedal, please contact us for consultation*



*Mounting Dimension L-bracket*

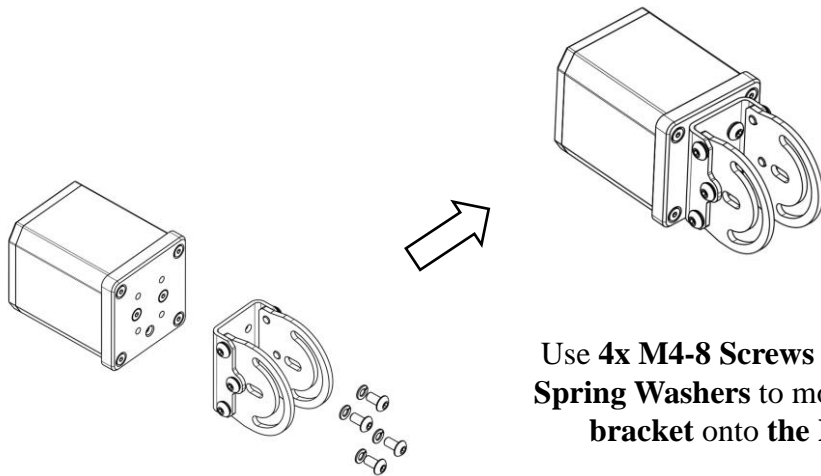


*Mounting Dimension U-shaped multi-directional bracket*



## Installation

d. *“U-shaped multi-directional bracket” installation to VNM Direct Haptic*

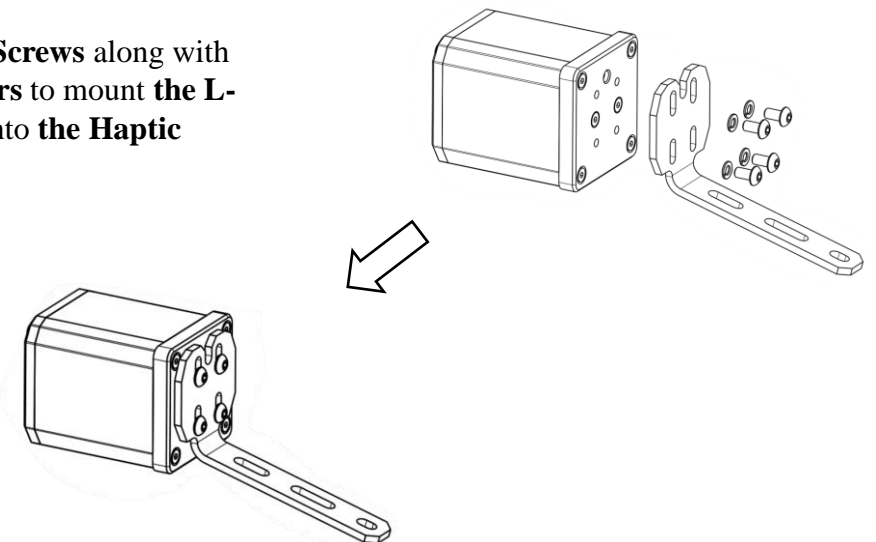


Use 4x M4-8 Screws along with Spring Washers to mount the U-bracket onto the Haptic

## Installation

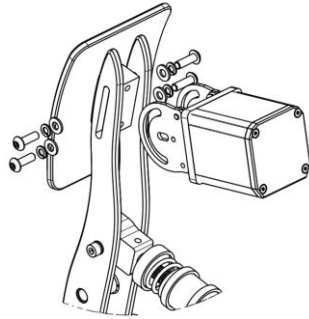
e. *“L-bracket” installation to VNM Direct Haptic*

Use 4x M4-8 Screws along with Spring Washers to mount the L-bracket onto the Haptic



## Installation

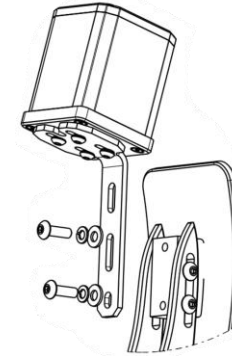
f. “U-shaped multi-directional bracket” installation for VNM Brake or Throttle Pedal



**Remove the side screws** holding the Pedal Face Plate. Use the provided **M5-16 Screws** along with **Spring and Flat Washers** to mount the haptic unit to the pedal. You are free to choose any mounting angle you prefer for the Brake and Throttle

## Installation

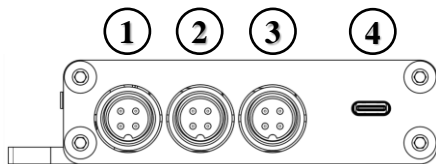
g. “L-bracket” installation for VNM Clutch Pedal



Use the provided **M5-12 Screws** along with **Spring and Flat Washers** to mount the haptic unit to the pedal.

## Connection

1. GX12 port for Clutch
2. GX12 port for Brake
3. GX12 port for Throttle
4. USB-C port to PC



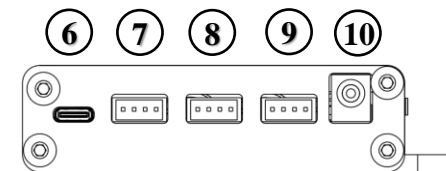
Right side of the VNM Controller Box

5. **DFU/Run Mode** switch.  
(Always make sure the controller is in **Run Mode**. DFU Mode is used for firmware updating only)



Bottom side of the VNM Controller Box

6. CN 1 port  
(Not currently in use)
7. HT1 port for Haptic 1
8. HT2 port for Haptic 2
9. HT3 port for Haptic 3
10. DC 24V power



Left side of the VNM Controller Box

To **connect** the VNM Direct Haptic, simply plug it into one of the three ports: HT1, HT2, or HT3 on the VNM Controller Box

**Disclaimer:** Always plug the DC 24V power jack into the controller box **before** plugging it into an outlet



*“Congratulations on completing the setup. If you have any questions or encounter any problems, please contact us for support!”*